

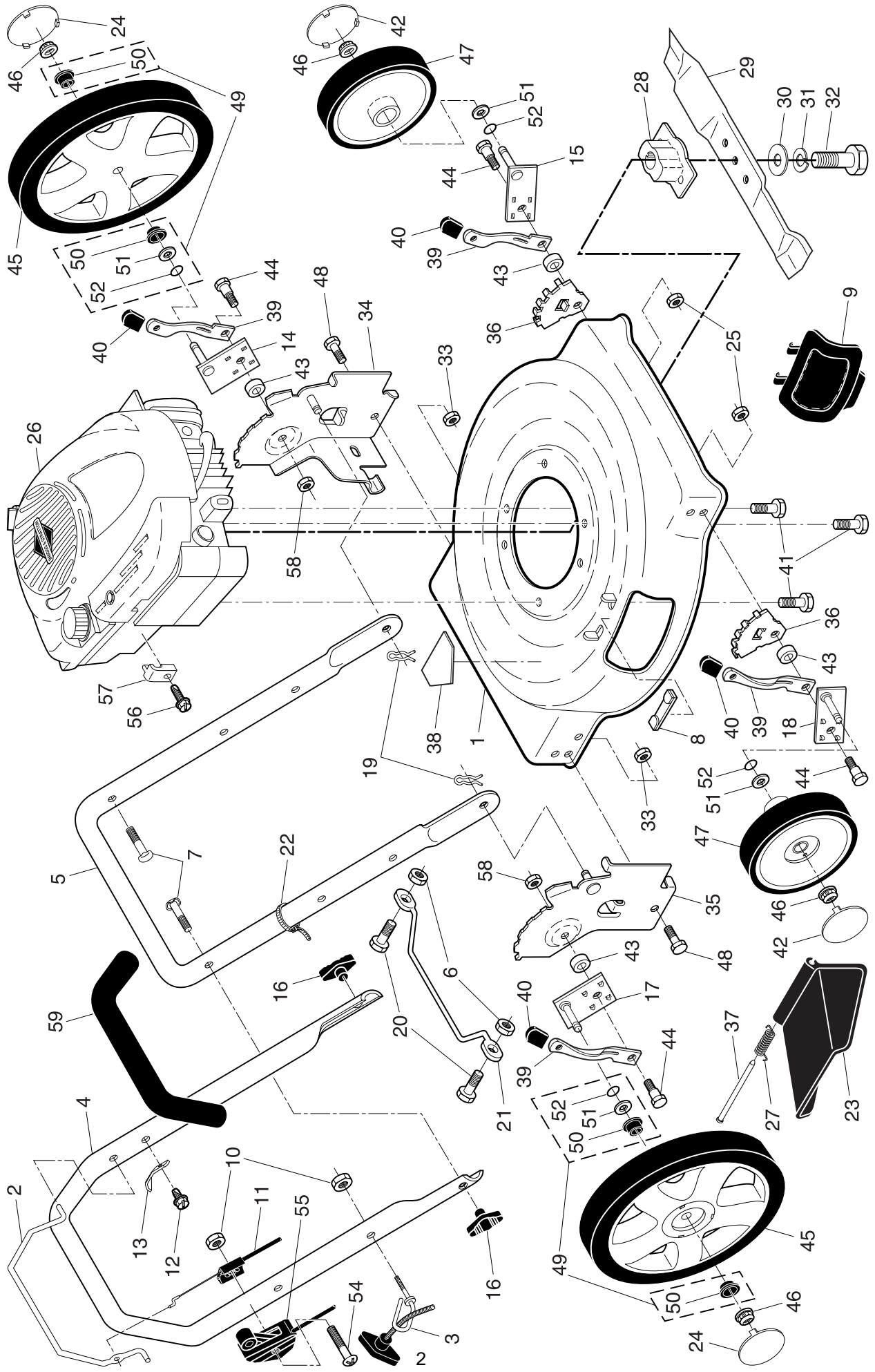
ILLUSTRATED PARTS LIST

CUSTOMER MODEL NUMBER 6056SM

PRODUCT NUMBER 961 11 00-09

MFG. ID. NUMBER 96111000900

ROTARY LAWN MOWER -- CUSTOMER MODEL NO. 6056SM (96111000900) PRODUCT NO. 961 11 00-09



ROTARY LAWN MOWER - - CUSTOMER MODEL NO. 6056SM (9611100900) PRODUCT NO. 961 11 00-09

KEY NO.	PART NO.	DESCRIPTION	KEY NO.	PART NO.	DESCRIPTION
1	532 18 52-63	Lawn Mower Housing (Includes Key Number 38)	31	532 85 02-63	Helical Lockwasher 3/8
2	532 16 17-48	Control Bar	32	532 85 10-84	Hex Head Screw 3/8-24 x 1/4 Grade 8
3	532 17 95-85	Rope Guide	33	873 80 05-00	Locknut 5/16-18
4	532 17 36-93	Upper Handle (Includes Foam Grip)	34	532 17 44-13	Wheel Bracket, Support, LH
5	532 17 42-91	Lower Handle	35	532 17 44-14	Wheel Bracket, Support, RH
6	532 06 91-80	Locknut, Hex 1/4-20	36	532 16 57-04	Wheel Bracket, Adjuster
7	532 19 15-74	Handle Bolt 5/16-18	37	532 16 08-33	Hinge Rod
8	532 16 16-22	Clip, Closeout	38	532 18 21-66	Danger Decal
9	532 16 08-30	Plate, Mulcher	39	532 16 85-99	Selector Spring
10	532 13 20-04	Nut, Hex	40	532 08 78-77	Selector Knob
11	532 13 31-07	Engine Zone Control Cable	41	532 15 04-06	Hex Head Thread Rolling Screw 3/8-16 x 1
12	532 75 06-34	Hex Thread Rolling Screw #10-24 x1/2	42	532 16 43-78	Hubcap, Front Wheel
13	532 12 51-62	Up-Stop Bracket	43	532 18 39-01	Washer
14	532 16 86-01	Axle Arm Assembly, Rear, LH	44	532 16 08-28	Shoulder Bolt
15	532 18 92-77	Axle Arm Assembly, Front, LH	45	532 18 17-85	Wheel & Tire Assembly, Rear, 14"
16	532 19 19-38	Handle Knob	46	532 08 39-23	Locknut, Hex 5/16-18
17	532 16 86-02	Axle Arm Assembly, Rear, RH	47	532 14 35-93	Wheel & Tire Assembly, Front, 8"
18	532 18 92-78	Axle Arm Assembly, Front, RH	48	874 76 05-14	Hex Head Bolt 5/16-18 x 3/4
19	532 05 17-93	Hairpin Cotter	49	532 19 34-98	Kit, Bushing, High Wheel
20	532 08 58-25	Hex Head Screw 1/4	50	532 19 36-96	Bushing, Nylon, Black
21	532 15 41-47	Footguard	51	532 08 83-48	Washer, Flat
22	532 06 64-26	Wire Tie	52	532 18 81-52	O-Ring
23	532 16 08-31	Discharge Guard	54	532 18 33-65	Screw
24	532 19 25-19	Hubcap, Rear Wheel	55	532 17 02-97	Throttle Control
25	532 16 67-85	Nut, Hex	56	532 08 38-16	Screw
26	- - -	Engine, Briggs & Stratton, Model Number 12H802 (Order parts from engine manufacturer)	57	532 11 11-90	Clamp
27	532 19 34-36	Torsion Spring	58	873 93 05-00	Nut, Hex, Centerlock 5/16-18
28	532 19 37-07	Blade Adapter	59	532 16 42-65	Grip, Foam
29	532 14 11-14	22" Blade	- -	532 18 21-91	Warning Decal (not shown)
30	532 85 10-74	Hardened Washer	- -	532 19 70-59	Operator's Manual, European
			- -	532 19 70-60	Operator's Manual, Scandinavian

NOTE: All component dimensions given in U.S. inches. 1 inch = 25.4 mm. **IMPORTANT:** Use only Original Equipment Manufacturer (O.E.M.) replacement parts. Failure to do so could be hazardous, damage your lawn mower and void your warranty.